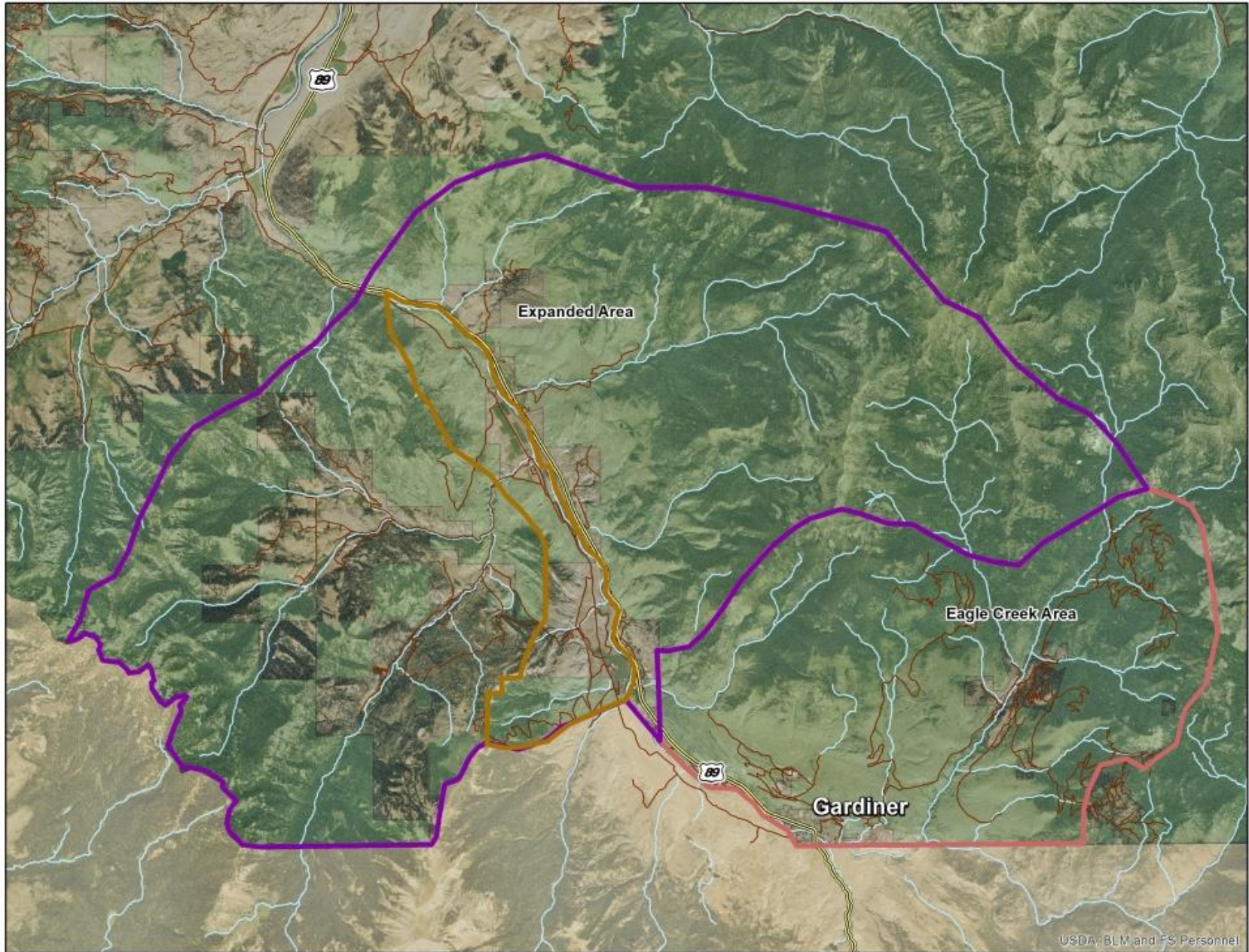
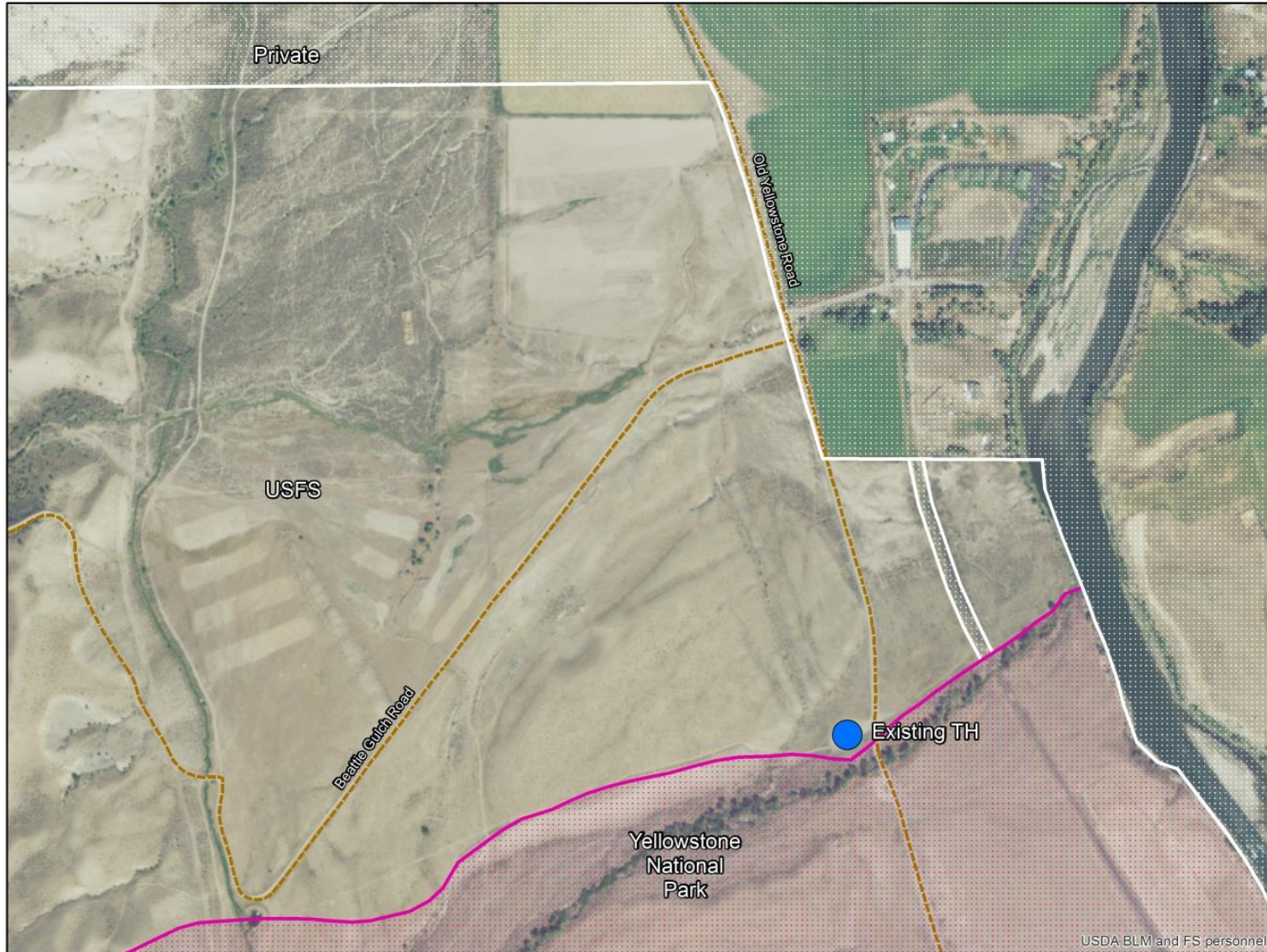


Bison Hunt – Beattie Gulch



Beattie Gulch





Public Safety



Old Yellowstone Road (County Road)



ISSUES/OBJECTIVES

- **Public Safety** – Along County Road and in close proximity to subdivision
- **Firing Line Effect** - Discourages movement outside of YNP into Montana

Alternative Concepts

Alternative #1 : No Hunt Closure (no shooting/field dressing/attractants)

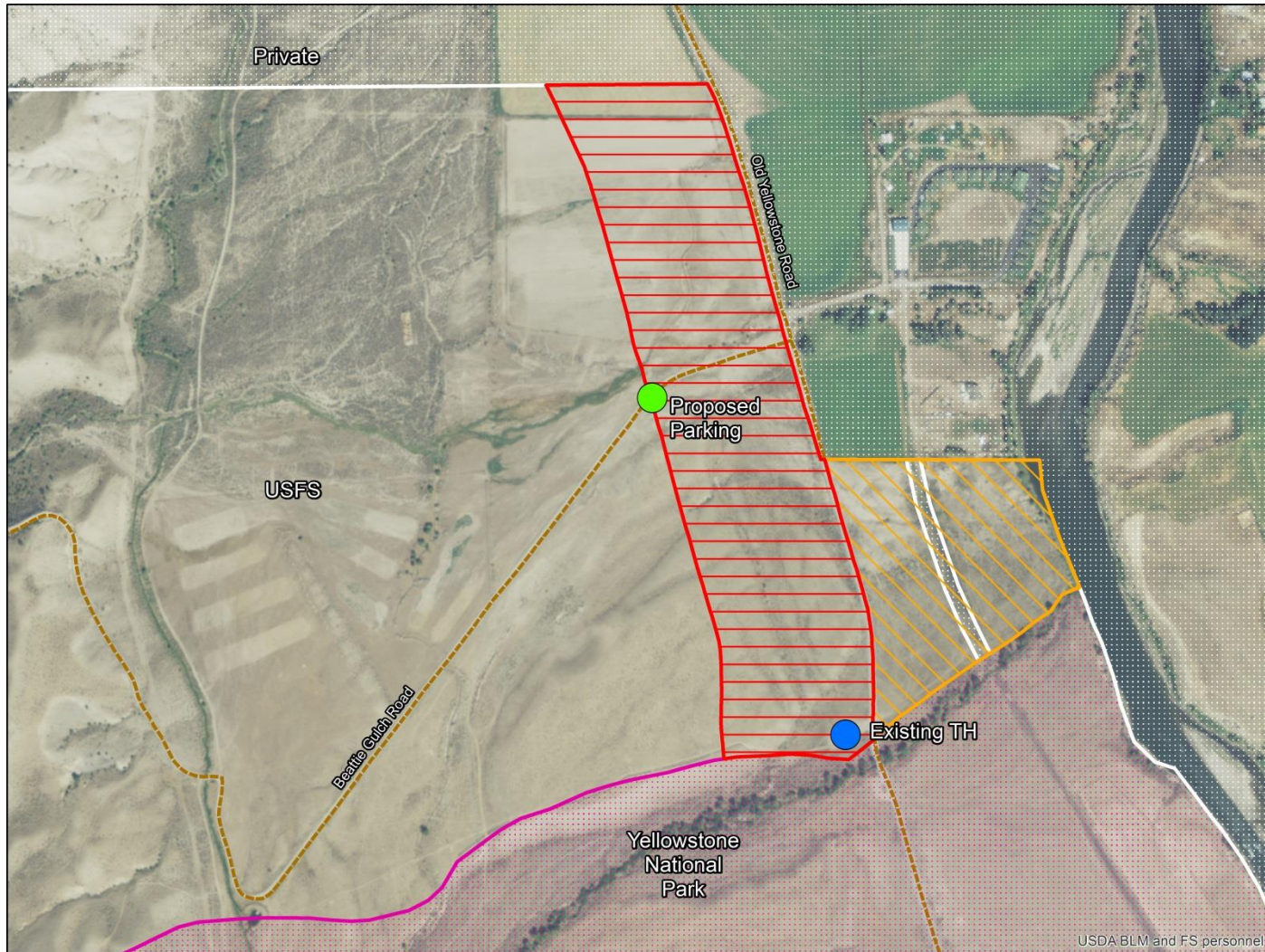
Alternative #2 : Alternative #1 w/ no hazing (as *specifically* related only to the hunt)

Alternative #3 : Total Beattie Gulch closure

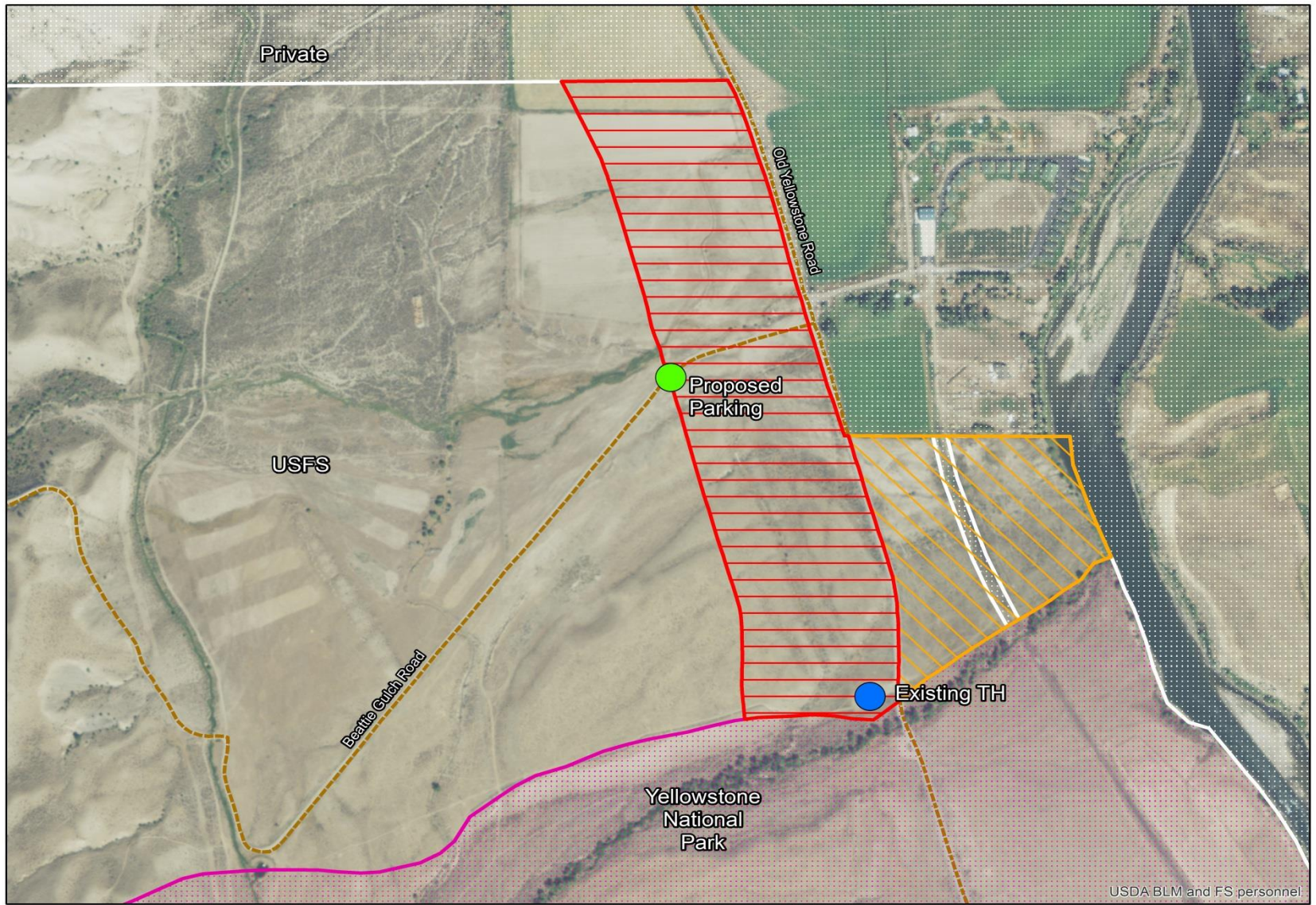
Alternative #4 : Designed & Adaptive constraints at Beattie Gulch

Alternative #5 : “Fence-off” Alternative #1 Closure

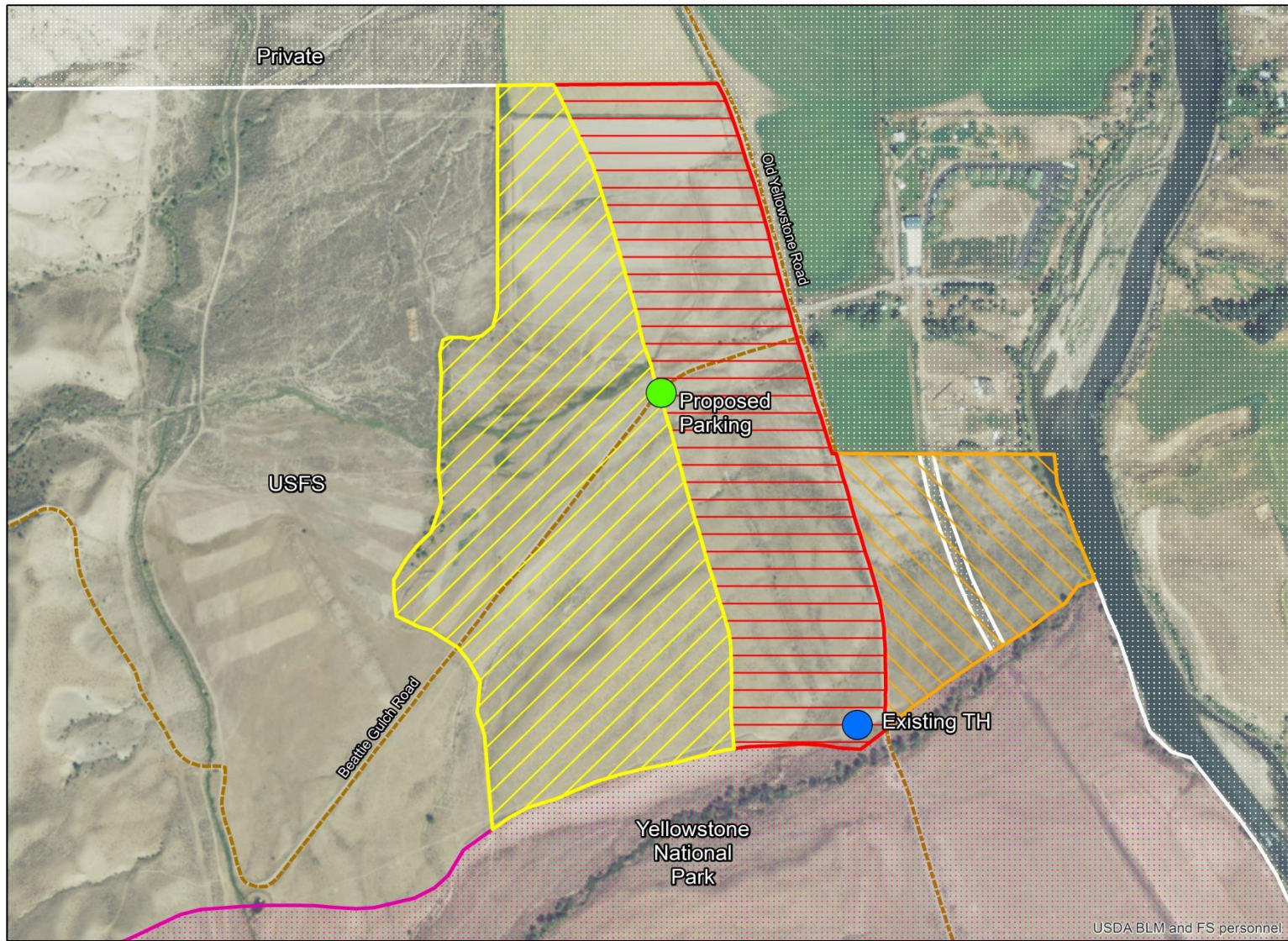
Alternative Concept #1



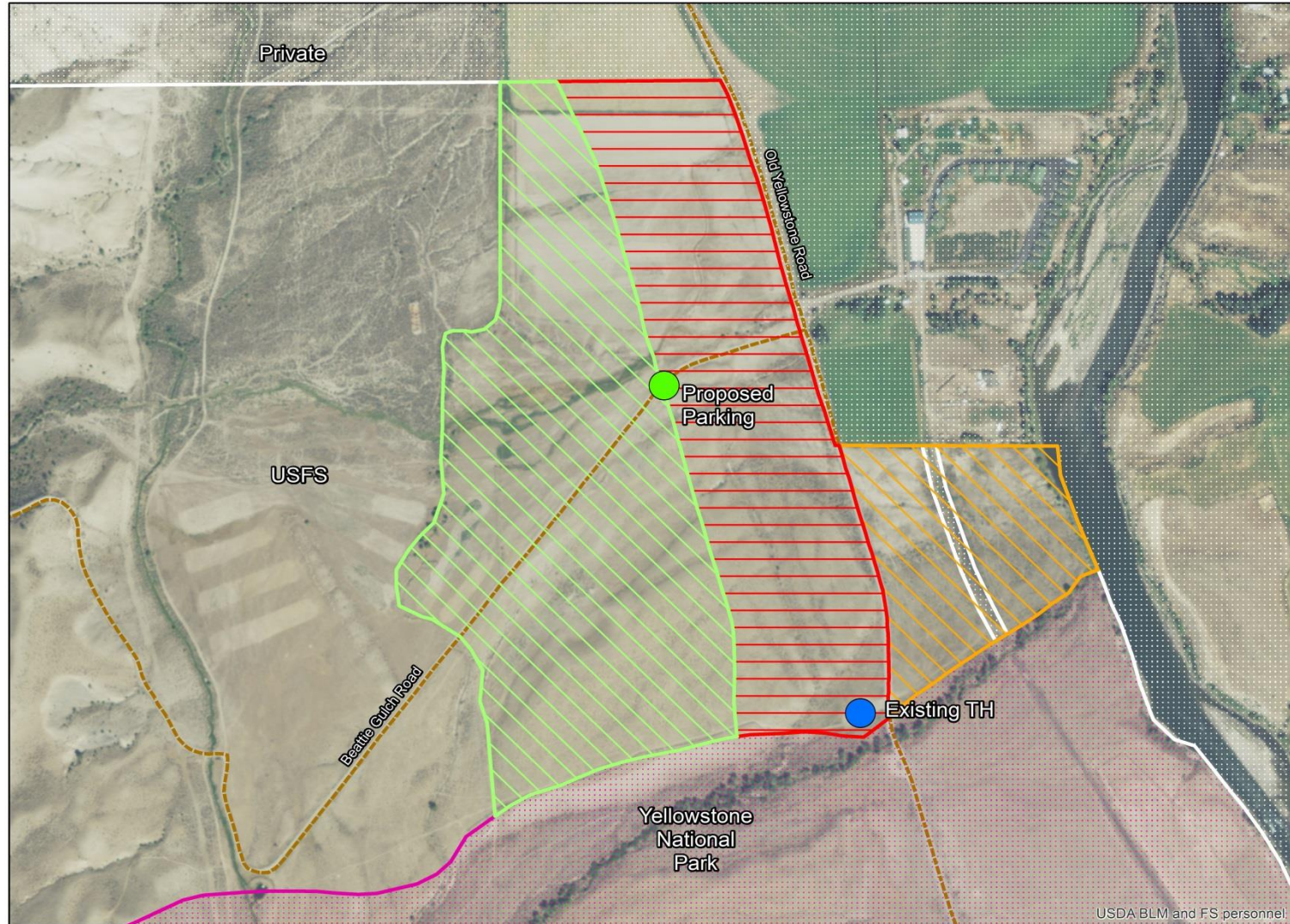
Alternative Concept #2



Alternative Concept #3



Alternative Concept #4



Alternative #4 continued...

Goals

- Improve distribution to suitable habitats
- Reduce hunter-hunter conflict by expanding the harvest area
- Reduce concentration of harvest at Beattie Gulch and the subsequent risk of attracting and habituating grizzly bears near human areas
- Reduces visibility to the public of bison harvest and processing areas

Alternative #4 continued...

Achieve Goals Through –

1. A temporal closure of all harvest activities by all parties either:
 1. Every other week for the entire week; or
 2. Tuesday through Thursday of each week; or
2. An area closure to provide a secure migratory corridor to the public land to the north; or
3. Divide the hunting area into smaller units and limit harvest quota's in those units

Alternative Concept #5

