

Preserving Yellowstone bison genetics using assisted reproductive technology

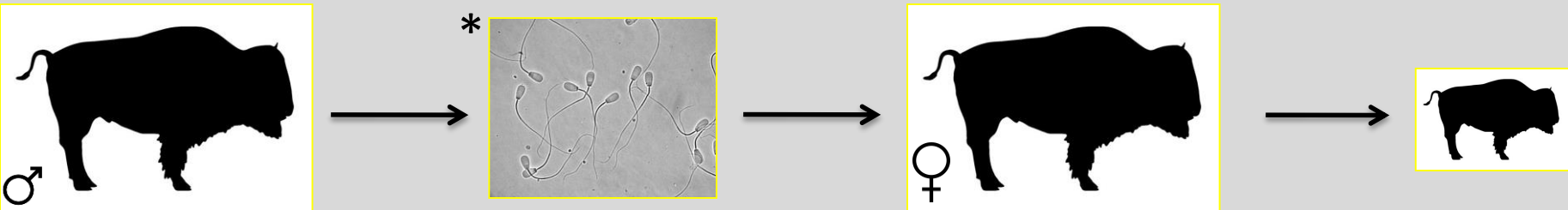
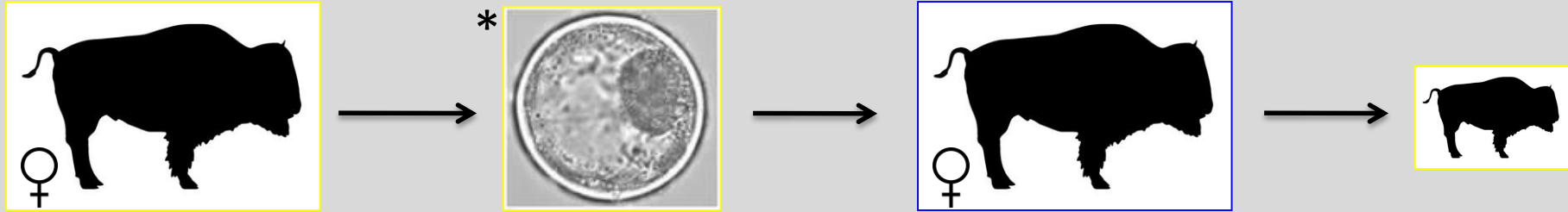
Jennifer Barfield, PhD
Assistant Professor



Assisted Reproductive Technologies

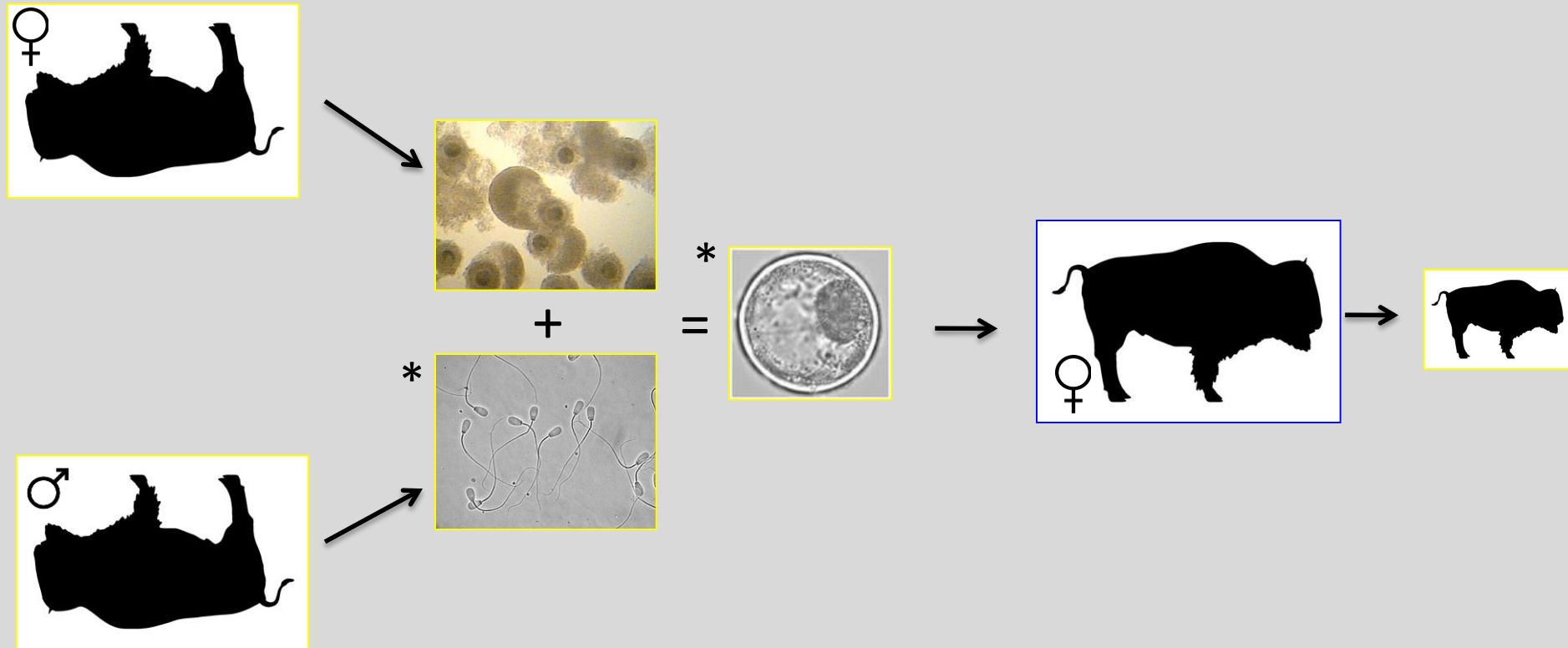
- Artificial insemination
- Embryo recovery and transfer
- In vitro embryo production
- Embryo Cryopreservation
- Estrus Synchronization
- ICSI
- Gonadal tissue preservation
- Cloning

How are offspring generated?



* Denotes a cleaning step

How are offspring generated?



Success = Calves!









Creating Sustainable Futures for People, Animals and the Environment

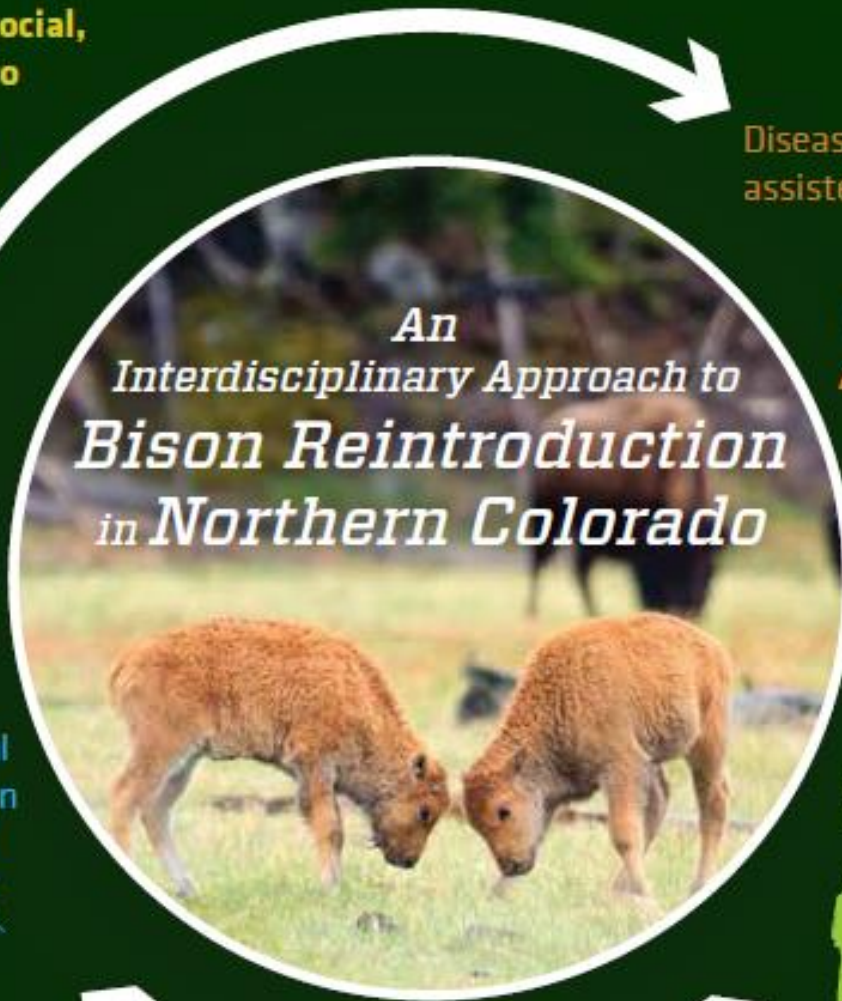
This research model builds on social, ecological, and animal science to return plains bison to an important grassland protected area, while developing a novel, model approach to addressing the complex challenges of species reintroduction.



Impacts on bird & mammal communities & ecosystem function



*An
Interdisciplinary Approach to
Bison Reintroduction
in Northern Colorado*



Disease mitigation through assisted reproduction



Public perception & human health benefits



